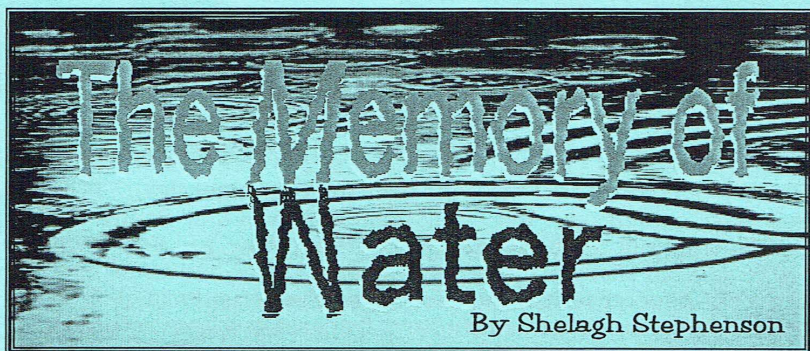




Company Theatre  
Presents



Directed by Steve Wright

2nd - 16th August

2003

The Rose Centre,  
Belmont

**Cherie Mcquilkin (Mary)**

This is Cherie's first time at Company Theatre, but she is no stranger to the stage with over ten years in a variety of roles. Also an accomplished television performer with guest roles on notable productions such as "City Life", "Riding High", and "Shortland Street", Cherie has just finished a degree in journalism and is doing shifts in a radio newsroom. Past favourite roles include parts in "Party Piece" and "Via Satellite" for Dolphin Theatre and Helena in a production of "Midsummer Night's Dream" that went to Singapore.

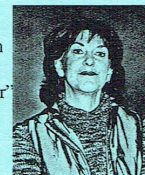


**Penny Skyrme (Vi)**

Penny has been involved with Company Theatre since 1987 when she played in Roger Hall's play "Fifty-Fifty". Early beginnings at University in Britain and at Victoria in Wellington ensured she "got the bug". Penny was involved with the Pumphouse Green Shed Lunchtime Theatre for a number of years. Her more recent plays for company have included "Social Climbers", "Outside Edge", and "Eugenia".

**Jill Chamberlain (Teresa)**

Recently arrived from the UK, Jill has been very busy in the short time she has been here. Her first role was a one-act play called "Face the Music" for Torbay Dramatic Society, followed shortly after that with the part of Linda in "Curtain Up On Murder" for Company Theatre. Her next role for Company was Charlotte in "The Cherry Orchard". Jill's talents extend to being an accomplished set designer and artist.

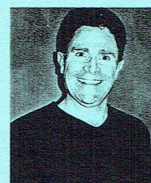


**Donna Verey (Catherine)**

Recently Donna played Lady Macbeth, adding to a number of notable Shakespearean roles Donna has played: "The Merchant of Venice" for Shoreside Theatre, Celia in "As You Like it", Jaquanetta in "Love's Labours Lost", Phoebe in an earlier production of "As You Like It" all in Christchurch. Donna has had a number of contemporary roles to her credit including Sharon in "Outside Edge" and Annabelle in "Pass The Butler".

**Bob Stevens (Mike)**

Company Theatre goers will recognise Bob as Sprules the butler in "Tons of Money". Over ten years in the theatre Bob has a number of roles to his credit. A recent favourite is Norman the genial philosopher in the Alan Ayckbourn trilogy of plays called "The Norman Conquests". Bob has intimated that he has had a genuine laugh and a genuine tear in the eye at every rehearsal for this play. "A play with a gamut of real feelings and I feel privileged to be part of it".



**Richard Parmee (Frank)**

Last seen on stage as Aubrey the male lead in Company Theatre's production of "Tons of Money". His roles for Company have included the Doctor in an "A Kind of Alaska", Alex in "Money and Friends" and Jeff in "Straight and Narrow". He also directed Company Theatre's excellent production of "Brilliant Lies". Certainly no stranger to the boards, he lists among his favourites the role of Peter in "A Taste of Honey" and Gerry in "Prisoners of Mother England".

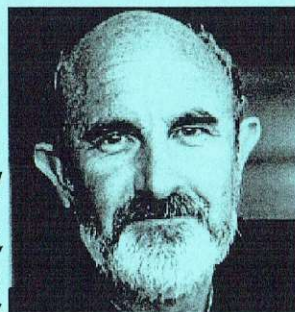
**DIRECTOR'S NOTES FOR MEMORY OF WATER**

The play's title carries a beautiful symbolism: as diluted as the sisters' memories of their mother are, the fact remains her inescapable influence will always be real in their lives. Laughter is as much a guest at this funeral as grief. The Memory of Water is on one level a study of the nature of memory and its existential limitations, and on another a tight-knit, dramatic comedy on the psychological impact of family relationships.

Having experienced first hand the dynamics of three sisters growing up from teenagers to women over the past eight years, I feel a certain qualification for directing this play. Cina, Penny and Letitia, were not too dissimilar from Teresa, Mary and Catherine. I was amazed that sometimes they would swear and curse each other but never lose their love for each other. That through it all, their sisterly bond was strong and transcended any argument they might have had with each other. Like Mary (the middle) Penny is almost a doctor, although not of medicine. Having been born in the area this play is set was another motivating factor in my interest in this play. It has been an absolute joy working with this very talented and co-operative cast. They have each brought inventiveness to the play. Their contribution to its workability has been invaluable.

**STEVE WRIGHT - DIRECTOR**

Previous productions Steve has directed for Company Theatre include Roger Hall's "Social Climbers" "Outside Edge" by Richard Harris and "Curtain up on Murder". Steve has a penchant for New Zealand plays and has directed Roger Hall's "Market Forces" (Howick Little Theatre), "Prisoners of Mother England" and "Glide Time" for Torbay Dramatic Society, "Via Satellite" by Anthony McCarten, and Robert Lord's "Bert and Maisy" for The Dolphin Theatre. An accomplished actor as well, he has many diverse roles on his CV including television appearances in Hercules and Xena and has a few TV advertisements to his name.



Patrons are reminded to turn off cell phones.

**SYNOPSIS**

Action takes place over two days at a Northern England family home  
Time: Early Nineteen Nineties

**CAST**

Mary	Cherie McQuilkin
Vi	Penny Skyrme
Teresa	Jill Chamberlain
Catherine	Donna Verey
Mike	Bob Stevens
Frank	Richard Parmee

**CREW**

Director	Steve Wright
Director's Assistant	Sheila Stevens
Production Manager	Doug Bourke
Stage Manager	John Brocklebank
Wardrobe	Rebecca Cooper, Cathie Sandy
Lighting Design	Phil Searle
Lighting Operator	Mark Higgins
Sound Design	Sherry Ede
Sound Operator	Rob Searle
Properties	Kathy Gent
Publicity	Lynne Davis
Set Construction	Phil Davis, Jim Murphy, Tony Sandy, Richard Parmee
Stage Crew	Sheila Stevens, Lynne Davis, Rebecca Cooper, Donna Franks
Programme	Kirsty Whitehouse
Photographs	Sherry Ede
Front of House	Doug Bourke
Bookings	Kathy Gent
Rehearsal Prompt	Helen Cooper

**Acknowledgements**

Torbay Dramatic Society  
Browns Bay Trading Centre  
Mark Rowley Funeral Services  
Radio Flea

**AUDITIONS**

Auditions for Company Theatre's next production  
**"My Three Angels"**  
Will be held on Sunday 31st August 10 am at the Rose Centre  
Production Dates: 15th - 29th November  
Enquiries please phone Jocelyn McQuaid - 483 7287



*Donna Verey, Richard Parmee, Cherie Mequilkin, Bob Stevens, Jill Chamberlain, Front – Steve Wright, Penny Skyrme*