

### Cast - Order of Appearance

#### Donna Franks - Mary

It has always been Donna's dream to perform on stage. After drama classes, under the tutorage of Andy Saker, her first role was **Maureen** in *The Beauty Queen of Leenau*. Next, the wilful maid, **Dora**, in Mairangi Players' *No Time for Fig Leaves*, and then Company's **Tons of Money** playing **Louise**, an upper-class wife with crazy ideas, in the 1920's. Now Donna is playing Mary, a rather uptight straight talking, rather hysterical lady in the 1960's! Donna can't wait to see who she plays next?!

#### Vicki Lane -Barbara

This is Vicki's first show for Company. She recently appeared in *No Time for Fig Leaves* and *Rebecca* (both for Mairangi) but her first love is musicals, and she hopes to have time to commit to one soon. She has helped backstage at the North Shore Music Theatre and Howick Music Theatre.

#### David Adkins - John

This is David's 2nd play with Company Theatre, after *Outside Edge*. David is glad to return to this play, having played the role 12 years ago. "*Farce has always been a favourite for me, and Run For Your Wife has to be the fastest and funniest of them all*". No stranger to theatre, he has been involved since childhood, worked professionally as a stage manager in a London Cabaret and performed in numerous productions, including leading roles in *Cabaret*, *Oliver*, *Me & My Girl*, *God spell*, *Guys & Dolls*. In recent years David has directed *Blood Brothers*, *Chicago*, *Return to The Forbidden Planet* and *Little Shop of Horrors*.

#### Nigel Flockhart - Troughton

Having recently played a slimy blackmailer (*Houseguest*) and an Oxford Undergraduate (*Charley's Aunt*) for Mairangi Players and an obsequious lawyer (*Tons of Money*) for Company in 2003, Nigel finishes the year playing a Policeman. Training has included numerous pints "down the local", watching untold episodes of THE BILL and perfecting the phrase "Hello, Hello, Hello, What's all this then ?" .

#### Richard Parmee - Stanley

On stage at Company for the third time this year, Richard says "Having played *Porterhouse* in a previous production and knowing what a fantastic play this is I just couldn't pass up the opportunity to be in it again. Getting the role of *Stanley* (thank you so much Sherry) has been an absolute joy and to work with my mate David Adkins...just brilliant!"

#### John Clarke - Porterhouse

This is John's 4<sup>th</sup> play with Company after *How The Other Half Loves*, *Arsenic and Old Lace*, and *Brilliant Lies*. He also performs in musicals, playing a wide variety of characters from snowmen and munchkins in *Wizard of Oz*, to the hard nosed director in *42<sup>nd</sup> Street*". John may also be seen occasionally on TV ads, and shows such as *Shortland Street* and *Street Legal*. His latest film role is playing a tough Super 12 team manager on the new NZ film *Skin and Bone*. "Thanks to Sherry and all the crew, and I'm looking forward to a great season"!

#### Chris Chambers - Bobby

A regular with Mairangi Players, Chris was recently seen as *Colonel Sir Francis Chesney* in *Charley's Aunt* (2003) and in "*House Guest*" (2003). His first role for Company Theatre was *Martin* in "*Curtain Up On Murder*" (2002). He has been involved with various TV productions, commercials and modelling assignments. He had a 2 year contract with the Mercury Theatre 1968 through 1969 appearing in the majority of the productions. Previous to that, he was involved with Central Theatre, Remuera.

For Membership of Company Theatre phone

Sheila on 445.6580.

Our EMAIL LIST IS FREE!

Our next production is Roger Hall's

**Take A Chance on Me.**

March 20 to April 3rd, 2004.

Auditions: December 7th, 7.00pm.

Phone the director,

Kathy Gent on 4456447.

www.companytheatre.co.nz



**RUN  
FOR  
YOUR  
WIFE!**

By Ray Cooney

**Directed by Sherry Ede**

The Rose Centre Theatre

School Road, Belmont

November 15 - 29, 2003

Bookings: 4456447.





(In order of appearance)

Mary.....Donna Franks  
 Barbara.....Vicki Lane  
 John Smith.....David Adkins  
 Sergeant Troughton.....Nigel Flockhart  
 Stanley Gardener.....Richard Parmee  
 The Reporter.....James Chambers  
 Sergeant Porterhouse.....John Clarke  
 Bobby.....Chris Chambers

**THE SCENE**

The play is set at the *Wimbledon* flat of John and Mary Smith, and the *Streatham* flat of John and Barbara Smith. The time is one sunny morning in summer around 1969.

**ACT 1 Morning.**

**ACT 2 A moment later.**

**INTERVAL**

15 minutes  
 See Tony at the Bar in the foyer.



**THE SET**

The jigsaw set design is created by **Angie Holmes.**  
 Input from **Jill Chamberlain** and help from the crew.

**LONGEST RUNNING COMEDY**

This play opened at The Criterion Theatre at the West End, in London, on 12 December 1983 and didn't close until 5th May 1990!



Director.....Sherry Ede  
 Production Manager.....Molly Clarke  
 Set Design.....Angie Holmes  
 Costumes.....Cathie Sandy  
 Properties.....Alex Wharton  
 Lighting Design & Operation...Bob Wilson,  
 Renee Matthews  
 Makeup/Hair/Dressers.....Cathie Sandy,  
 Alex Wharton  
 Stage Manager.....Sheila Stevens  
 Photographer /Publicity.....Sherry Ede  
 Sound Design.....Sherry Ede  
 Production Assistant..... Marie Ortquist  
 Prompt.....Marie Ortquist  
 Set Building: Tony Sandy, Angie Holmes,  
 Richard Parmee, Anthony Whitehouse,  
 Bob Stevens,Alistair Fletcher,John Burton  
 Front of House Manager.....Doug Bourke  
 Bar Manager.....Tony Sandy  
 Bookings Manager.....Kathy Gent  
 Programme.....Sherry Ede  
 With thanks to: Joe Smith, Maureen  
 Kenny, Phil Searle, Gail Carran, Karen  
 Leyden, Justin Latimer and Tim Ede.

**THE PLAY**

Ray Cooney's plays are often associated with the "take my wife.... please!" humour, or the "garters-'n-knickers" school of comedy à la Benny Hill. However, Cooney's works also share a likeness to the more sophisticated slapstick of Monty Python (like the "Say na more...know wot I mean?" elbowing sketch). This combination of cleverness and absolute accessibility is what has made Cooney one of the most successful and widely produced playwrights in the world.

Director's Note

I have chosen to set this production in 1969 for the opportunity to enjoy some of the music, fashion and colours of that era! Perhaps also, the 60's were just the beginning of the feminist revolution and the openness of the gay community - both revolutionary ideas to the contents of this story! I have enjoyed working with a wonderful cast on Cooney's focused and cleverly constructed writing. The classic cross purpose dialogues, mistaken identities and comic misunderstandings will surely guarantee the continued revival of this show around the world. Please sit back, relax, and be entertained with this wonderful and classic piece of very British theatre.

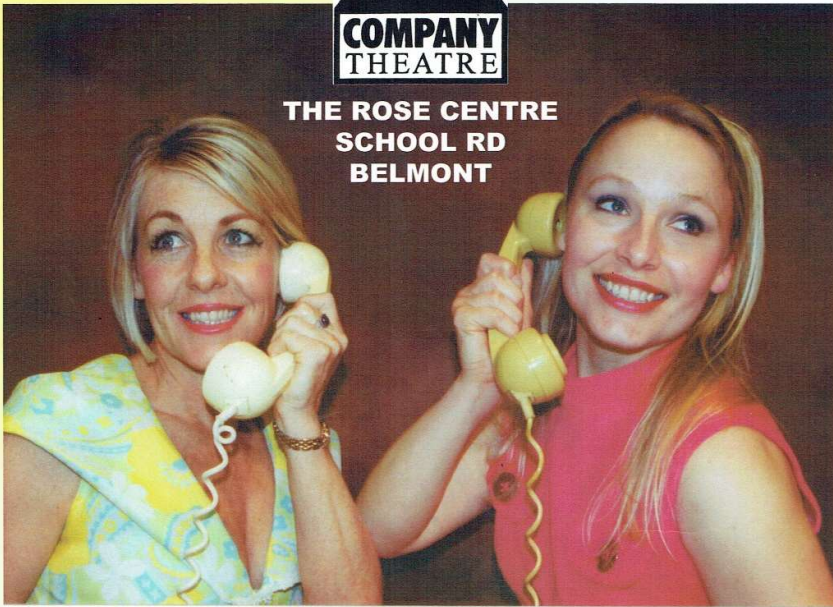
**The Director - Sherry Ede**

This is only Sherry's sixth time in the director's seat and half of those have been this year. In April, she directed the comedy *Tons of Money* by Alan Ayckbourn, (Company Theatre) and in July she directed her own script *The Pain and the Passion* about the N.Z. aviator Richard Pearse, as part of the *First Flight Celebrations 1903- 2003*, produced by MOTAT. She enjoys a variety of theatrical styles, but particularly comedy, and spent several years writing, directing & acting with a Devonport based group known as *Arthro*, an independent theatre venture. She enjoys the work of Australian playwright David Williamson, and has directed his comedy *Money and Friends* in 1998, and acted in *Brilliant Lies*, in 2002. She is currently the *President of Company Theatre*.





THE ROSE CENTRE  
SCHOOL RD  
BELMONT



RAY COONEY'S

## ***RUN FOR YOUR WIFE!***

**The longest running British Comedy on the West End**

This production set in late 1960's. Directed by Sherry Ede.

**NOVEMBER 15 to 29, 2003**

**Tuesday to Saturday @ 8pm**

**But Saturday 22<sup>nd</sup> November @ 7.00pm (pre-Rugby)**

**Matinees on Sunday Nov 16 & 23 @ 2.00pm**

**Bookings: 4456447 Tickets \$18 (\$15)**

*Hurry, some shows sold out*



*John Clarke, David Adkins, Nigel Flockhart*





**RUN FOR YOUR WIFE:** With John Clarke, Richard Parmee, Nigel Flockhart (back row); Vicki Lane, David Adkins, Donna Franks (front).

Company Theatre's final production for the year is the hilarious British comedy 'Run For Your Wife'.

This show holds the award for the longest running comedy show at the West End in London, ever.

Written by Ray Cooney, it tells the story of a fairly ordinary looking taxi driver, by the name of John Smith, who turns out to be leading a double life with two wives.

Wife number one is called Mary and lives in

Wimbledon. Wife number two is called Barbara and lives a quick four minute taxi ride away, in a suburb called Streatham.

The two wives have never met and do not know about the each other. One wife thinks her husband is away working on the day shift, and the other wife believes her husband is away working on the night shift. When John Smith accidentally gets himself involved in rescuing an old lady from a mugging, he gets mis-

taken for a mugger himself and is hit over the head with the ladies handbag! He winds up in the local hospital where he has to give his home address... well, the hospital records have two addresses for John Smith! What should he say?

From this point onwards, John Smith gets into deeper and deeper difficulty as he attempts to explain his situation. What follows is a series of hilarious mistaken identities, misunderstandings,



**DOUBLE LIFE:** John (David Adkins) with wives Barbara (Vicki Lane) and Mary (Donna Franks).

cross purpose dialogues and just about every comical theatrical device ever known to have worked in this type of comedy theatre.

David Adkins well-known actor/director for the North Shore Music Theatre, plays the lead role. (David also performed this part ten years ago, and says of all the parts he has ever played, this one is his outright favourite and he is delighted to have a second opportunity.)

There are some wonderful character roles for the rest of the cast including two very confused police sergeants (Nigel Flockhart and John Clarke) a rather dizzy interior decorator (Chris Chambers) and

the friendly unemployed neighbour Stanley, (played by Richard Parmee) who just drops in to help, and gets completely caught up in the comedy action. And of course there are the two wives, played by Donna Frank and Vicki Lane.

Director Sherry Ede has chosen to set the show in the late 1960s with a set and music match.

Opening this Saturday November 15 at 8pm, and then for a season until November 29. Some nights are sold out. Tickets \$18 and \$15.

Please phone Kathy on 445-6447 for bookings. Matinee shows on Sunday November 16 and 23 are at 2pm.



## 2003 RUN FOR YOUR WIFE



*John Clarke, Richard Parmee, Nigel Flockhart, Front-Vicki Lane, David Adkins, Donna Franks*



THE DEVONPORT FLAGSTAFF PAGE 18

NOVEMBER 6 2003

## 'Run for your wife' comedy opens at Rose Centre

One of the most popular West End comedies 'Run for your wife' takes on a 1960s twist when it shows at the Rose Centre this month.

Company Theatre's production opens at the Rose Centre, Belmont, on Saturday 15 November and runs to November 29. Written by Ray Cooney in the mid 1980s, it became the longest running comedy ever to be staged in London's West End.

This production directed by Sherry Ede, is set in the late 1960s, with scene setting music such as the classic "Love and Marriage" (sung by Frank Sinatra) and "My Guy" (original version sung by Mary Wells).

The story centers on a rather ordinary looking bloke called John Smith, who manages to live a double life, with two wives on opposite ends of town. One wife thinks he is busy on the day shift, with the other one believes he is on the night shift.

When his neighbour Stanley discovers the truth and asks what he does in his spare time, John replies 'Sleep a lot'.

This cleverly written comedy uses every theatrical device from mistaken identity jokes to cross purpose dialogues, many similar in tone to the classic Pete and Dud routines. Some performances are sold out, so phone Kathy on 445 6447 for bookings.

There is a special pre-rugby performance



Eyeing up his opportunities is John Smith (David Adkins) between his two wives, Barbara (Vicki Lane) and Mary (Donna Franks).

at 7.00 pm on Saturday November 22nd for you to get home to watch the game on TV. when the show will finish by 9.10 pm in time





