



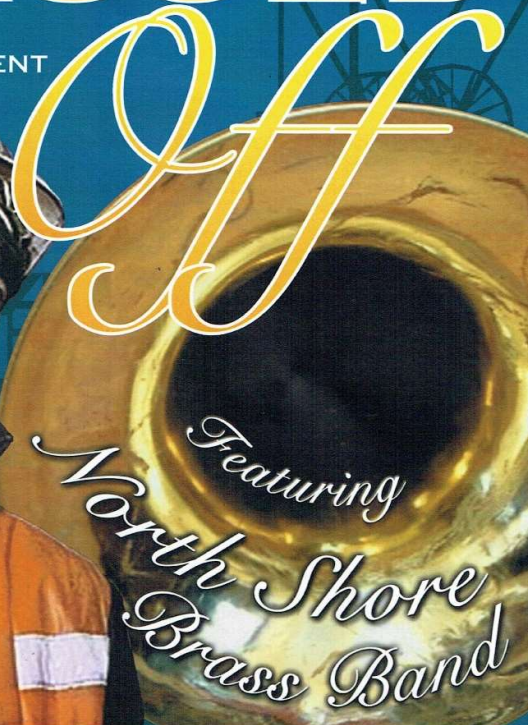
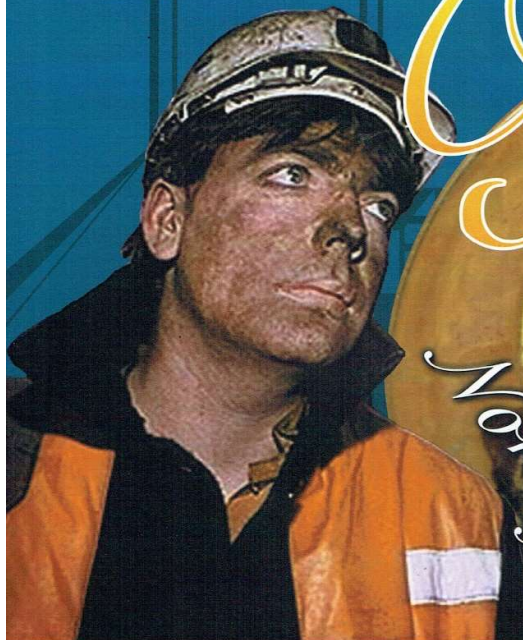
COMPANY THEATRE

FROM THE SCREENPLAY BY MARK HERMAN

BRASSED

BY PAUL ALLEN

DIRECTED BY KATHY GENT



7th - 21st August 2010

At The Rose Centre, School Road, Belmont

DIRECTORS NOTE

Since I discovered that *Brassed Off* had been adapted for the stage, I have wanted to direct it for Company Theatre; to do so in collaboration with North Shore Brass hot foot from their successes at the National Championships, has been the most amazing experience.

My grandfather was a miner at Alfreton Colliery in Derbyshire and died of coal workers' pneumoconiosis before I was born; his father was a miner before him, my uncles were all miners; my father was only saved from a similar fate by serving in the RAF and gaining an education which then allowed him to leave the pit village. Pit villages obviously have an emotional pull for me because I chose to teach at Dinnington Comprehensive School in South Yorkshire for 3 years in the 1970's, where most of the children's fathers worked at Dinnington or Kiveton pits. The community was one of the warmest I have ever lived in and the band was thriving. The pit was closed in 1992, two years before the fictional Grimley mine of *Brassed Off*, and the village's wonderful identity apparently changed for ever. It was fascinating for me to learn that in March this year Dinnington Colliery Band won a BBC TV competition aimed at reviving the fortunes of a once great brass band; the band has been saved by securing a £1 million recording contract with music giants Universal and The Daily Mail headline on 2 March read 'Real Life *Brassed Off*'.

The stirring music, pathos, humour and despair make this play a very emotional one for a cast and for an audience. Those who have seen the film will recall fondly the script's wicked black humour, the fabulous brass band music and the genuinely touching moments involving the members and families of Grimley Colliery Band. My thanks go to the cast and crew for their total commitment and to the band for putting up with us theatrical 'lurvies' and entering enthusiastically into the spirit of the show. I hope you, the audience, enjoy the play as much as we enjoy performing for you.

Kathy Gent, Director

SYNOPSIS OF SCENES

The action takes place at various locations in Grimley Yorkshire, in the Saddleworth villages of Lancashire and at the Royal Albert Hall during the Summer/Autumn of 1994. There will be an interval of 20 minutes.

NORTH SHORE BRASS

North Shore Brass goes from strength to strength; established in 1921, they are now the top-ranked brass band in the North Island. Recent accolades include being the Champion Band of Auckland in 2003, the 4th placed band at the National Championships in 2006, Band of the Year in 2007 and most recently, overall runner-up at the 2010 National Championships.

Cornets:	Andrew Large, Kerry Wood, John Sullivan, Greg Moverley, Vaughan McDonald, Matt Howell, Robert Parker, Dave Allen
Flugel:	Carolyn Ramsbottom
Tenor Horns:	Natalie Hormann, Andy Williams, Karen Barry, Laine Ratsep
Euphoniums:	Robert Simpson, Riki McDonnell, Peter O'Shaugnessy, Andrew Leech
Trombones:	Andrew Leech, Osamu Shimmoto, Jamie Ford, Nick Brimelow
Basses:	Denis Spurdle, Wayne Barry, John Mann, Paul Taufau
Percussion:	Simeon Cheeseman, Robert Parker

COMPANY THEATRE MEMBERSHIP

For Membership of Company Theatre phone Sherry on 445 2386
or email: companytheatre@gmail.com www.companytheatre.co.nz

CAST

Danny	Bernard Holmes
Phil	Paul Wilson
Sandra	Pip Simonian
Andy	Ian Vincent
Gloria	Carolyn Ramsbottom
Jim	Allan Mathews
Vera	Julie Collis
Harry	Brent Jones
Rita	Trudy Thumath
Shane	Oliver Gent / Toby Arrow
Melody	Daisy Eaglesome / Meg O'Connor
Craig	Jack O'Connor / Chris O'Connor
Nursing Sister/Miner's Wife	Barbara Farron
Nurses	Julie Collis, Trudy Thumath
Bailiff/TV Cameraman	John Clarke
Bailiff/Championship Official	Fred Gould
Press Photographer	Doreen Gould

PRODUCTION TEAM

Director	Kathy Gent
Production Assistant	Richard Parmée
Stage Managers	Sheila Stevens, Linda Camplin, Sherry Ede
Band Manager	John Sullivan
Set Design	Caroline Parker, Anne Rimmer
Costumes	Mary Gardner, Cathie Sandy
Properties	Fred & Doreen Gould
Set Construction/Painting	Dave Best, Caroline Parker, Richard Parmée, Tony Sandy, Ernie Caley, John Gardner, Gareth Hancock, Carol Braithwaite
Lighting Design	Martin Searanke
Lighting Assistants	Helen Searanke, Jordan Griffiths
Sound Production	Terry Smith
Lighting & Sound Operator	Jordan Griffiths
Hair & Make-Up	Cathie Sandy
Publicity	Kathy Gent
Photos	Nicky Gyles
Programme/Bookings	Richard Parmée
Front of House & Bar Manager	Alastair Fletcher
Front of House Team	Members of Company Theatre

CAST PROFILES

Bernard Holmes - "Danny" Bernard is a Wellingtonian with 20 years theatre experience. Favourite roles included acting with The Winter Shakespeare in "Anthony and Cleopatra" at the Pumphouse, "Canterbury Tales" at Auckland Music Theatre, "Laburnum Grove" at Dolphin Theatre and "Situation Comedy" at The Rose Centre. Born on the "Yorkshire, Notts, Derby Coalfield" Bernard has a great affiliation with the character of Danny.

Paul Wilson - "Phil" After being accepted as one of the youngest ever applicants into the National Youth Theatre back in 2000, Paul then went on to train at the Academy of Creative Training and has taken part in many stage productions including Kes, Accrington Pals, A Midsummer Nights Dream, Ten Thousand Several Doors and the first production outside the West End of Caryl Churchill's 'A Number'. In 2006 Paul was nominated for best actor at the Brighton Fringe Festival for his performance as Bottom in A Midsummer Nights Dream and began to take professional work in addition to his day job. He moved to New Zealand in January 2010.

Pip Simonian - "Sandra" This is a show close to Pip's heart as she lived in Yorkshire for 10 years. She's loving the challenge of playing Sandra, a feisty wife and mother of four! This is Pip's second show with Company, having played Jacqueline in Boeing Boeing in 2008. She's just relieved she doesn't have to play in the band!

Ian Vincent - "Andy" Ian's passion to try new things brings him to his acting debut. Originally from Mansfield, a mining town in the North of England, Ian has experienced firsthand the challenges of growing up in a place like Grimley. In his mid-twenties, Ian, like his character of Andy, was also battling to decide whether there was more to life than his hometown and a dead-end job at a local DIY store. Without a Gloria to lure him to stay, Ian decided to pack it all in and head to Leeds, to study architecture. His ongoing desire to spread his wings brought him to New Zealand, via London, just over four years ago. He lives in Devonport with his 'Gloria' (who he picked up somewhere between here and Mansfield!)

Carolyn Ramsbottom - "Gloria" Carolyn is used to being on the stage but not as an actor. A music graduate, she was a prize-winning soloist with the Yorkshire Co-op Band and has performed and recorded solos internationally. Acting is a new thing for her but being Gloria has not been too difficult. The role calls for a mid-twenties female flugel player from Yorkshire. She is a mid twenties female flugel player from Yorkshire! The role was made for her (or vice versa!) What she has enjoyed most is meeting the cast and working with them and she'll be sad when it's over. She says it's like one big family and it's been great.

Allan Mathews - "Jim" At the age of 58, Allan is delighted to be playing someone his own age. His very first role in theatre was when, at age 14, he played a 78-year old bum who went through the trash barrels at Heathrow Airport. Since then he's been involved in a fair few productions, including a couple of Alan Ayckbourn's brilliances and Robert Lord's "Joyful & Triumphant" in Titirangi, "Heavenly Creatures" and "The Diary of Anne Frank" in Orewa, "Ladies Night", "Ladies Night 2", "No Sex Please, We're British", in Taupo.

Julie Collis - "Vera" Julie has been part of the Auckland acting scene for many years in various TV appearances, and no, we didn't win the boat on the 'Lotto Big Wednesday' ad. She has thoroughly enjoyed appearing with Company Theatre over the last four years, the addition of the North Shore brass band this time was too good to miss. The role of the warm hearted 'Vera' is a great contrast to last year's formidable Mrs Potter, in 'Tom, Dick and Harry!' Thanks to all the cast and crew for all the fun and cakes! Special thanks to our tireless director Kathy Gent.

Brent Jones - "Harry" Brent grew up and went to school in the village of Grimethorpe in Yorkshire, the village on which the fictional Grimley is based and has been on our accent coach! He has done acting training with Raymond Hawthorne and Sioux Smith together with voice and speech training with Linda Cartwright. Brassed Off is the first big stage show Brent has been in. "Working with such a fantastic cast and a passionate director is seventh heaven for me", he says.

Trudy Thumath - "Rita" This is Trudy's 5th production with Company Theatre, having previously appeared in "Kindertransport, "Caught in the Net, "Daughters of Heaven," and "Murdered to Death." She is really grateful to Kathy for casting her and for the chance to work with such a talented cast and crew. "I am really enjoying the part of Rita. It is quite a novelty for me to play a character who survives the entire play!"

Oliver Gent - "Shane" Oliver's two passions are soccer and drama so this part of the football crazy Shane suits him well. He played Michael in Peter Pan and Tinman in The Wizard of Oz at Devonport Primary and has also appeared in productions with Devonport Drama.

Toby Arrow - "Shane" At 14 and a TGS student, Toby has been involved with theatre since the age of 5. Since 2005 he has been an active member of Devonport Drama, playing King Arthur in Avalon, Demetrius in A Midsummer Night's Dream and Fred in Pirates of Penzance. A keen musician, Toby currently drums with Rockquest 2010 regional finalists Yell At Me and the TGS concert band.

Barbara Farron - "Nursing sister/Miner's Wife" For 10 years, Barbara acted with The Older Women's Theatre, even performing in the Grand Hall in Parliament. After appearing in 'Allo'Allo with Company in 2008, she is loving being part of Brassed Off, although as a music fan, she says she'd also like to be in the audience!

Meg O'Connor - "Melody" Meg has been involved with several of Geoff Allen's Devonport Drama productions

Daisy Eaglesome - "Melody" Daisy loves being on stage and has been in school productions at Devonport Primary.

Chris - "Craig" Chris has been involved with several of Geoff Allen's Devonport Drama productions

Jack O'Connor - "Craig" Jack has just started taking drama lessons at Devonport Drama.



ACKNOWLEDGEMENTS



Ace Engravers, TV3, North Shore Hospice, Yorkshire Post, Solid Energy, Fairview Village, The Warehouse, 3D Products, North Shore Hospital, Eversleigh Hospital, Yorkshire Post, North Shore Soccer Club, New Plymouth Operatic Society, North Shore Music Theatre, Xytech Technologies



Wardrobe - Cathie Sandy