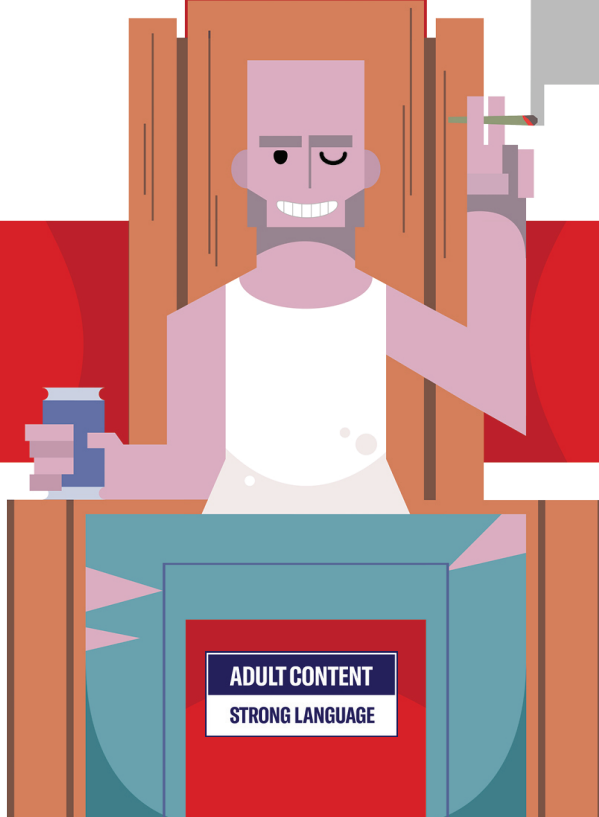




COMPANY THEATRE

JERUSALEM

MAGIC & MAYHEM IN AN ENGLISH FOREST



WRITTEN BY
**JEZ
BUTTERWORTH**

DIRECTED BY
**KRISTOF
HAINES**

**ADULT CONTENT
STRONG LANGUAGE**

5-19 NOVEMBER 2022



AT THE ROSE CENTRE, BELMONT BOOKINGS AT [ITICKET.CO.NZ](https://www.iticket.co.nz)





WELCOME

from Stephen Hood

PRESIDENT OF COMPANY THEATRE

Company Theatre welcomes you to its third show of 2022! Following 2019's "*Stones in His Pockets*" and 2020's "*Peninsula*", Kristof Haines returns to direct Johnny 'Rooster' Byron's stand for the lost gods of England against the hypocrisy of modern suburban life, with the dialect of many of this play's characters being a bit more colourful than that traditionally used by the BBC.

In May 2023, Company Theatre will be presenting Alan Bennett's "*The History Boys*" – seeing the welcome return of director Suzy Sampson after 2018's "*Popcorn*", which it's hard to believe is now almost five years ago! It would be great to see you there.

THOUGHTS ON THE PLAY

from KRISTOF HAINES

DIRECTOR - *Jerusalem*

From the very first time I read this play, *Jerusalem* enchanted me. That might seem like an odd thing to say about a play populated with vagabonds, miscreants, and wasters, but amidst all the irreverence and wild revelry lies a soft heart of gold. There's a yearning for an age when



rules and checkboxes didn't rule our lives, when personal connections meant more than anything... when you had the freedom to truly set your own course.

Whether or not a time like that ever really existed is beside the point - the fact remains that deep down, many of us long for that same kind of freedom. So for one evening, forget your 9 to 5, your mortgage and your car payments, and join Johnny Byron and his band of baffled berserkers in Rooster's Wood. But be careful: you might not ever want to leave.

THE CAST

Phaedra	<i>Monica Reid</i>
Ms Fawcett	<i>Marissa Willson</i>
Mr Parsons	<i>Andrew Kent</i>
Johnny 'Rooster' Bryon	<i>James Carrick</i>
Ginger	<i>Duncan Preston</i>
Professor	<i>Chris Smith</i>
Lee	<i>Max Easey</i>
Davey	<i>Frankie Johnson</i>
Pea	<i>Monique Rabie</i>
Tanya	<i>Ária Harrison-Sparke</i>
Wesley	<i>Dion Hunt</i>
Dawn	<i>Steph Curtis</i>
Marky	<i>Harry Brown</i>
Troy	<i>Bryan Johnston</i>

THE SETTING

Set over the course of one St George's Day, in a tiny town in rural Wiltshire, England, Jerusalem follows the joyfully defiant antics of Johnny 'Rooster' Byron. Faced with eviction after decades of squatting in his caravan in the woods, Rooster gathers an army of gold-hearted ruffians to mount one final stand against the onset of order and bureaucracy. While the town of Flintock is fictional, the landscape of Wiltshire, with its ancient standing stones, barrows and hill forts, is not. This is a mythic land, where King Arthur held court and giants lifted mighty slabs of rock to build Stonehenge. And there's a little magic in Rooster's Wood, if you look closely enough. Will you see it?

ACT 1: Rooster's Wood, 9 o'clock St George's Day morning, 2009

INTERVAL OF 15 MINUTES

Act 2: Rooster's Wood, 2 o'clock St George's Day afternoon, 2009

INTERVAL OF 15 MINUTES

ACT 3: Rooster's Wood, 5 o'clock St George's Day evening, 2009



KRISTOF HAINES

Director

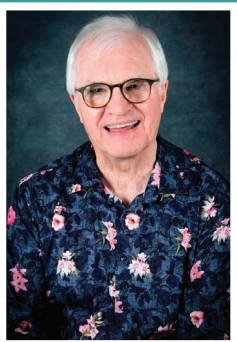
Kristof sidled onto the Auckland community theatre scene in 2012 with a couple small roles in Shoreside Theatre's *Macbeth*, and hasn't really stopped since. His first time directing a full-length play was for Company Theatre's '*Stones in His Pockets*', before going on to direct the widely acclaimed '*Peninsula*' (after two last minute Covid-cancellations) in 2020. He's also had the chance to appear onstage for Company Theatre, most recently in the tragically short-lived '*Neville's Island*' as the pure-hearted birdwatcher Roy. For Kristof, directing *Jerusalem* has been a delight and a challenge like no other, and he's looking forward to bringing the wild magic of Rooster's Wood to audiences across Auckland.

MEET THE CAST

JAMES CARRICK

Johnny 'Rooster' Byron

James (Jimmy) Carrick is an award-winning actor based in Devonport. This is his fifth appearance in a Company Theatre production, having last appeared in *Neville's Island*. James had no intention of treading the boards again after Covid put an early end to *Neville's Island* but he couldn't resist this fantastic production.



CHRIS SMITH

Professor

Chris retired from Ship Management in 2020 and took up acting - treading the boards last summer as Tubal in *Merchant of Venice*. Knows Wiltshire well, but can't remember any Glastonbury Festival trips. Chris has 'a lot in common' with the Professor as a misspent middle age takes its toll.

DUNCAN PRESTON

Ginger



This is Duncan's first uninterrupted performance since 2020 and his second play set in a magical English Forest, having played Bottom in *A Midsummer Night's Dream*. Duncan is relishing the opportunity to play the frustrating but loveable Ginger and is looking forward to reuniting with director Kristof and a number of the cast with whom he has worked on previous productions. Unlike Ginger, Duncan is definitely not a DJ.



MAX EASEY

Lee

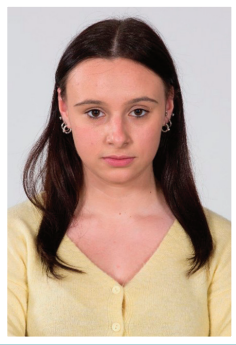
Max Easey is a graduate of Unitec's Bachelor of Performing Arts and has been in a variety of performances since his graduation in 2019. With a love for the play and the accent forming during his studies at university, Max was eager to be a part of this year's production.

FRANKIE JOHNSON

Davey



Frankie has been performing in Auckland community theatre for 5 years, most recently in Seed Theatre's production of *Oedipus For Kids*. Frankie has loved taking on the (mostly accent-related) challenges of playing Davey, discovering his naivety, humour, and rare moments of genuine care.



MONIQUE RABIE

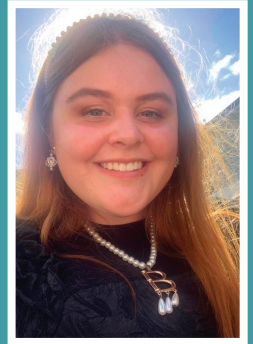
Pea

Monique Rabie is a recent graduate from Unitec and studied a Bachelor's in Performing for Stage and Screen. On the side she is a Swim Teacher. She feels really connected to Pea's character as she also loves to party and pull the finger, and is very excited to bring this show to the stage.

ĀRIA HARRISON-SPARKE

Tanya

Āria (Ngāti Tanagta, Ngāti Raukawa) is an award-winning actress and costume designer from Tāmaki Makarau. Her favourite roles have been Ophelia in 'Hamlet', Abigail in 'The Crucible' and Alice in 'Alice?' - a short film that won her 'best actress' at the Sweden Film festival and the Atlanta Comedy Festival. She is excited to be making her Company Theatre debut as Tanya Crawley.



MARISSA WILLSON

Ms Fawcett

Over the last 5 years Marissa has played many roles in local theatre. In 2021 she was in *Speaking with Tongues* which won best Drama at the ACTT Awards, and this year she played Veronica Novak in *God of Carnage* with Company Theatre. Marissa finds the concept of *Jerusalem* hugely compelling, with its thought provoking questions about the role Society plays on people who live outside its boundaries.



ANDREW KENT

Mr Parsons

Andrew has been part of a theatre smorgasbord. He has adopted the roles of vampire, rancher, wolf, grasshopper, and the occasional hero. Andrew was drawn to the irreverent fun and secretly thoughtful nature of this play and hopes that you too will enjoy a stroll through the refreshingly uncouth English forest of *Jerusalem*.

DION HUNT

Wesley

Dion has been involved in acting most of his life mainly in Australia and the UK and was most recently seen in *'God of Carnage'* with Company Theatre. An interesting link to *Jerusalem* is that he worked with the writer Jez Butterworth on his film *'Birthday Girl'*.



STEPH CURTIS

Dawn

Steph has been involved in the North Shore theatre scene for the last 5 years. This is her first run with Company after very nearly performing *Peninsula* with them in 2020 (thanks Covid!). She has been excited to be involved with *Jerusalem* since first hearing about it and hopes her portrayal of Dawn brings some extra heart and home to this magnificent production. Rule Britannia!



HARRY BROWN

Marky

Harry Brown is an aspiring young actor, new to Company Theatre but an active member of the National Youth Theatre. Harry has enjoyed the challenge of stepping into his first serious play after appearing in *Oliver*.

MONICA REID

Phaedra

Monica is an actor currently signed with Talent Banque. She recently had a supporting role in the feature film *'Gulf Livestock 1'*, and more recently performed the role of Barbie in Hilari Anderson's play *'The Boosting of Barbie'*. She is super excited to get her fairy wings on!



BRYAN JOHNSTON

Troy

Bryan has performed on stages large and small around the world over the last 20 years. Highlights of his time on the stage have included *Chic Nerds* (Edinburgh Fringe), *Savage/Love* (London), *Mancub* (Auckland Fringe) and playing the parts of Mercutio and Macbeth as part of Shakespeare in the Park (Shoreside Theatre). Bryan is hugely enthusiastic about working with such a talented cast in this production of *Jerusalem* and has relished the opportunity to bring the character of Troy to life in all his full blooded glory.

Behind the scenes...



MEET THE CREW

Director	Kristof Haines
Production Manager	Phillippa Hibbs
Stage Manager	Phillippa Hibbs
Set Design	Megan Woods
Lighting Design	Stephen Hood
Sound Design/Music Composition	Matt Rust
Costume Design	Phillippa Hibbs, Chrissy Woods,
Properties	Kristof Haines, Chris Smith, Sarah Dettwiler
Set Construction	'The Claystore' volunteers, Chris Smith, Megan Woods, Duncan Pres- ton, Dion Hunt, Stephen Hood, Kristof Haines
'The Claystore' Liaison	Peter Monti
Website/Social Media/Facebook	Sherry Ede, Phillippa Hibbs, Kristof Haines, Stephen Hood
Dance Coordination	Phillippa Hibbs, Kristof Haines
Morris Dance Training	Stephen Hood
Photography	Kathryn Nobbs
Poster Design	Isaac Taylor
Programme Design	Sherry Berg
Hair & Make-up	Cut Above Academy
Front of House Manager	Lesley Hawkey
Bar Manager	Alastair Fletcher
Box Office	Kathy Gent
Accounts	Stephen Willson

Harcourts
Cooper & Co



Ian Cunliffe 027 227 9322
ian.cunliffe@harcourts.co.nz
Licensed REAA 2008



ROWLEY

FUNERALS

Call us any time
09 445 9800

5 Anne Street Devonport Auckland 0624 | Email: info@rowleyfunerals.co.nz | www.rowleyfunerals.co.nz

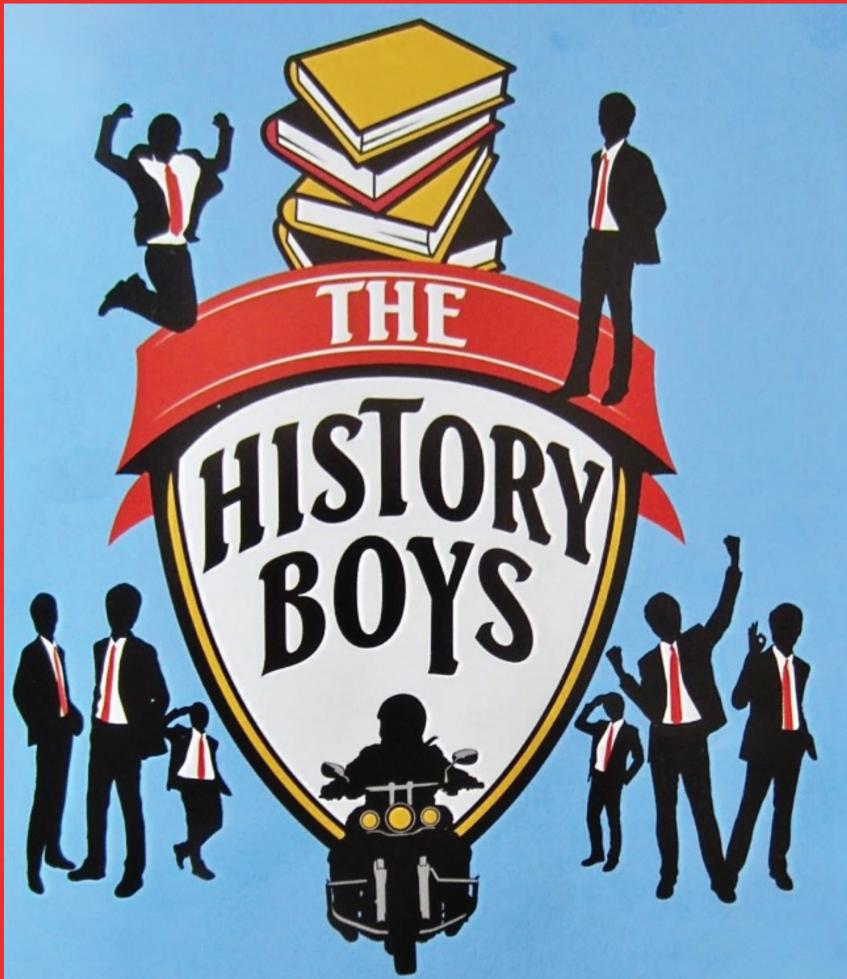
THANKS TO:

A special thank you to the volunteers who look after front of house.

Thank you to our major sponsors, Ian Cunliffe of Harcourts, Rowley Funerals, Stephen Dils, and The Claystore Workshop, Devonport

A big Thank You to the Rose Centre!

COMPANY THEATRE



by Alan Bennett

directed by Suzy Sampson

May 6 -20, 2023 at The Rose Centre